



Wall mount included

## Epson EB-575Wi / EB-585Wi

The bright choice in interactive projectors for today's BYOD classroom

Up to **3x**  
Brighter Colours<sup>1</sup>  
with  
Epson® Projectors



3 x Brighter Colours<sup>1</sup> and reliable performance – 3LCD, 3-Chip Technology.

One measurement of brightness is not enough – Look for both colour brightness and white brightness. The Epson EB-575Wi / EB-585Wi has:

Colour Brightness: 2700 lumens<sup>2</sup> (575Wi) and 3300 lumens<sup>2</sup> (585Wi)

White Brightness: 2700 lumens<sup>2</sup> (575Wi) and 3300 lumens<sup>2</sup> (585Wi)

PC-free interactivity – display and write on content from your iPad®/iPod®/iPhone®, Android™ device<sup>3</sup>, document camera, DVD player, or no source at all

Convenient collaboration for BYOD classrooms – wirelessly share<sup>4</sup> and compare students' work from multiple devices, simultaneously, with Moderator software<sup>5</sup>

Wireless interactivity – use EasyMP® software with a networked BrightLink projector to share and interact with content from your laptop as you move freely about the classroom



## The bright choice in interactive projectors for today's BYOD classroom.

The Epson EB-575Wi and EB-585Wi bring cutting-edge kinesthetic learning to the BYOD classroom. Offering 3x Brighter Colours<sup>1</sup> than competitive models, Epson 3LCD projectors ensure bright, vivid lessons. The 575Wi and 585Wi ultra-short-throw projectors deliver dynamic images, whatever the task at hand. And, they display images up to 100" from just 12" away. Best of all, with PC-free interactivity, these projectors make it easy to walk in and start an interactive session on any wall or whiteboard. Instructors can use the Moderator software to share students' work over the network from multiple devices, simultaneously. Or, they can wirelessly project content from iOS<sup>®</sup> or Android devices or utilize popular learning applications.

### Projectors at a glance



	<b>EB-575Wi</b>	<b>EB-585Wi</b>
Resolution:	<b>WXGA (1280 x 800)</b>	<b>WXGA (1280 x 800)</b>
Color Brightness:	<b>2700 lumens<sup>2</sup></b>	<b>3300 lumens<sup>2</sup></b>
White Brightness:	<b>2700 lumens<sup>2</sup></b>	<b>3300 lumens<sup>2</sup></b>
Interactive Brightness:	<b>2700 lumens<sup>2</sup></b>	<b>3300 lumens<sup>2</sup></b>

## Advanced connectivity



### Wireless interactivity

When using Epson EasyMP software with a networked interactive projector, teachers are no longer tied down by restrictive and confining cables. Educators can wirelessly display and interact with content as they move about the classroom with their laptop, experiencing a whole new level of interactive freedom.

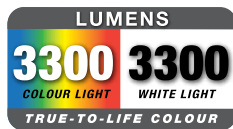
### Advanced network connectivity and management capabilities

Present A/V content over the LAN or annotate on network content using Epson's instant annotation tools. With Epson's EasyMP Monitor software, IT administrators can configure and monitor the status of their Epson networked projectors, including the remote viewing of power status, lamp hours and temperature/filter conditions.

### Epson iProjection App<sup>4</sup>

Display, annotate and control content from your iOS<sup>®4</sup> or Android mobile device with the free Epson iProjection App. Teachers can walk around the class and still share engaging content. The app is easy to use and navigate with intuitive menu options that make it simple to bring iOS and Android content to the big screen.

## Amazing image quality



### 3x Brighter Colours with Epson<sup>1</sup>

Brilliant image quality requires high colour brightness (colour light output), and Epson 3LCD projectors have 3x Brighter Colours than leading competitive projectors.<sup>1</sup>

One brightness measurement (lumens) is not enough. A projector's specification needs to show both high colour brightness and high white brightness. If colour brightness is lower than white brightness, images may be dark, dull and lose detail. If not provided, be sure to ask for a projector's colour brightness specification.



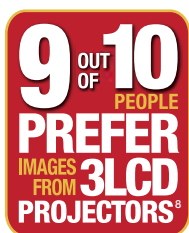
#### EPSON

High colour brightness and high white brightness

#### COMPETITOR

Colour brightness significantly lower than white brightness

Actual photographs of projected images from an identical signal source. Price, resolution and white brightness are similar for both projectors (Epson 3LCD and 1-chip DLP competitor). Both projectors are set to their brightest mode.



### 3LCD – The #1 projection technology in the world

- All 3LCD projectors have both high colour brightness and high white brightness
- All 3LCD projectors have 3 chips
- 25% lower power consumption for lower energy costs<sup>7</sup>
- 20 years of road-tested reliability

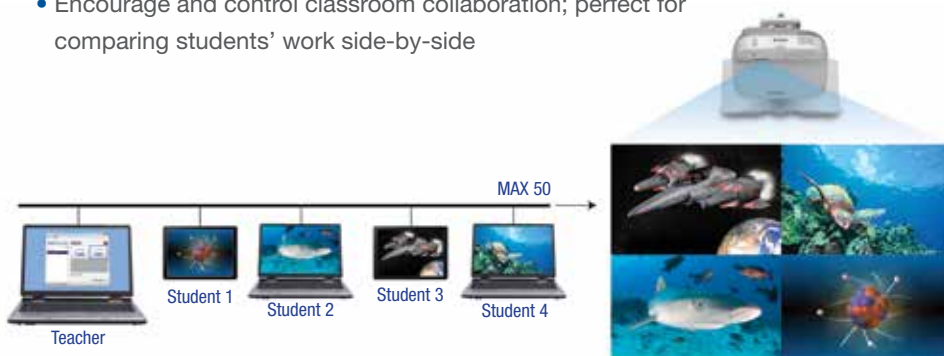


## Classroom collaboration

### Teaching tools

Support BYOD classroom collaboration using Epson's Moderator feature<sup>5</sup>.

- Moderator (teacher) can display up to four different device screens simultaneously and control which device screens to display
- Connect to up to 50 Windows®, Mac®, iOS or Android devices
- Encourage and control classroom collaboration; perfect for comparing students' work side-by-side



### Easy Interactive Tools 3.0

This new annotation software from Epson allows users to control projector settings over the network, record and save video from Epson document cameras, save, re-open and edit annotation files, access archived curriculum and program the interactive pen button to provide instant access to the most-used tools. Best of all, Easy Interactive Tools is free and ships with each interactive projector.

### Save energy and reduce operating costs

- **ECO Mode** — operates the projector at a lower brightness setting
- **Light Optimiser Mode** — adjusts the lamp brightness, based on the projected image
- **Auto Mode** — sensor automatically adjusts the lamp brightness, based on the room environment
- **Lamp dimming** — after a certain period of inactivity, the projector lamp dims, thereby extending the lamp life
- **Sleep Mode (A/V Mute)** — control your presentation; it's right at your fingertips
- **Direct Power On/Off** — power the projector on/off with the flip of a wall switch
- **Standby audio** — even when the projector is in Standby Mode, you can use the projector's internal speaker or pass audio out to an external speaker

**Better Products for a Better Future™**  
[www.epson.com.au/company/environment](http://www.epson.com.au/company/environment)

<sup>1</sup> Compared to leading 1-chip DLP business and education projectors based on NPD data, July 2011 through June 2012. Colour brightness (colour light output) measured in accordance with IDMS 15.4. Colour brightness will vary depending on usage conditions.

<sup>2</sup> Colour brightness (colour light output) and white brightness (white light output) will vary depending on usage conditions. Colour light output measured in accordance with IDMS 15.4; white light output measured in accordance with ISO 21118.

<sup>3</sup> Functionality may vary depending on hardware, application, and/or provider restrictions or limitations. Devices and cables not included.

<sup>4</sup> Check your owner's manual to determine if a wireless LAN module must be purchased separately to enable wireless connection on your Epson projector. Epson projectors can be networked either through the Ethernet port on the projector (check model specifications for availability) or via a wireless connection. Not all Epson projectors are able to be networked. Availability varies depending on model.

<sup>5</sup> Moderator feature is part of EasyMP Multi-PC Projection software.

<sup>6</sup> Data source: ProjectorCentral.com, Jan. 2014. Average of 1,243 shipping models for which the manufacturers provided lumens and total power data, all resolutions and brightness levels. Energy efficiency was measured as wattage per lumen. It was measured for both 3LCD and 1-chip projectors in each of six brightness segments. 3LCD projectors averaged less required electricity per lumen in each of the six segments.

<sup>7</sup> 9 out of 10 people preferred images from leading 3LCD projectors over leading 1-chip DLP business and education projectors. Leading projectors selected according to NPD data as of July 2013. Based on independent U.S. research conducted by Radius Research (July 2013).

<sup>8</sup> Includes one Mobile High-Definition Link® (MHL) HDMI port.

<sup>9</sup> ECO Mode is up to 10,000 hours for 575Wi, 6,000 hours for 585Wi. Normal Mode is up to 5000 hours for 575Wi, 4000 hours for 585Wi. Lamp life will vary depending upon mode selected, environmental conditions and usage. Lamp brightness decreases over time.

<sup>10</sup> See our website for convenient and reasonable recycling options at [www.epson.com.au/company/environment](http://www.epson.com.au/company/environment) and [www.epson.co.nz/company/environment](http://www.epson.co.nz/company/environment)

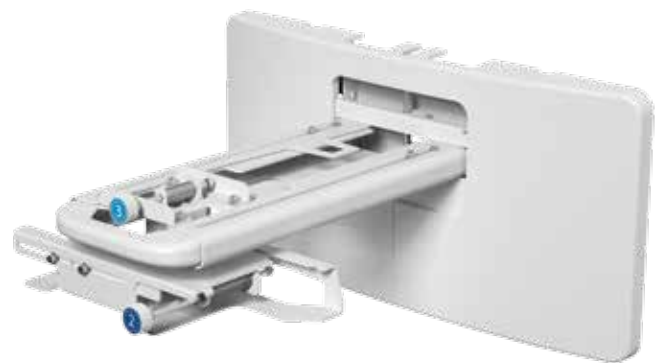
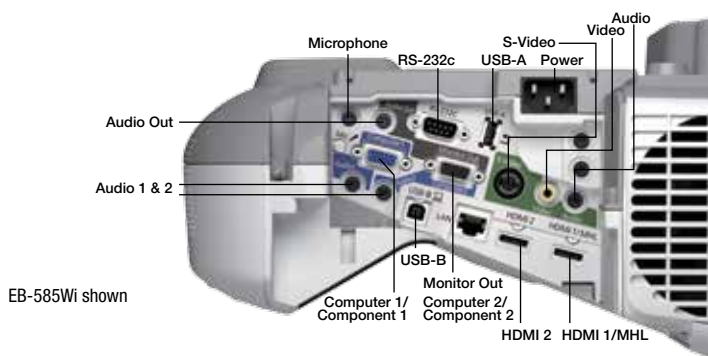
## Easy to use



### Simple Setup Suite from Epson

Epson projectors offer a suite of innovative features that ensure flexible placement and fast, easy setup.

- **Auto calibration** — get up and running in no time
- **2x HDMI** — use with multiple high-definition A/V devices. (Compatible with the latest laptops, Blu-ray Disc® and media players)
- **MHL** — the latest in connectivity<sup>9</sup>
  - Display content with MHL-enabled smartphones, tablets
  - Use the projector remote to control MHL-enabled devices
  - Charge your MHL-enabled device when it's plugged into the projector
  - Get instant access to movies, games and more
- **Quick Corner®** — this innovative feature allows you to move any of the four corners of an image independently, to adjust each corner for a perfectly rectangular picture
- **Quick, convenient control** — Instant Off® means no cool-down time required; it's ready to shut down when you are
- **Copy menu settings for multiple projector installations** — save on installation time; copy settings via a USB flash drive, USB cable or LAN
- **Flexible wall mount (included)** — the telescopic arm makes it easy to mount the projector, and then adjust the image, on any surface including plain walls and existing boards, as well as thicker boards



# Epson EB-575Wi / EB-585Wi



## Product Specifications

<b>Projection System</b>	3LCD, 3-chip technology
<b>Projection Method</b>	Front/rear wall mount/table
<b>Driving Method</b>	Epson Poly-silicon TFT Active Matrix
<b>Pixel Number</b>	1,024,000 dots (1280 x 800) x 3
<b>Colour Brightness<sup>2</sup></b>	
EB-575Wi	Colour Light Output: 2700 lumens
EB-585Wi	Colour Light Output: 3300 lumens
<b>White Brightness<sup>2</sup></b>	
EB-575Wi	White Light Output: 2700 lumens
EB-585Wi	White Light Output: 3300 lumens
<b>Interactive Colour Brightness<sup>2</sup></b>	
EB-575Wi	Colour Light Output: 2700 lumens
EB-585Wi	Colour Light Output: 3300 lumens
<b>Interactive White Brightness<sup>2</sup></b>	
EB-575Wi	White Light Output: 2700 lumens
EB-585Wi	White Light Output: 3300 lumens
<b>Aspect Ratio</b>	16:10
<b>Native Resolution</b>	1280 x 800 (WXGA)
<b>Lamp Type</b>	
EB-575Wi	215 W UHE
EB-585Wi	245 W UHE
<b>Lamp Life<sup>9</sup></b>	
EB-575Wi	Up to 10,000 hours (ECO Mode) Up to 5000 hours (Normal Mode)
EB-585Wi	Up to 6000 hours (ECO Mode) Up to 4000 hours (Normal Mode)
<b>Size (projected)</b>	
Area:	4:3 53" – 88" 16:10 60" – 100" 16:9 59" – 97"
<b>Keystone Correction Manual</b>	Vertical ± 3 degrees; Horizontal ± 3 degrees
<b>USB Plug 'n Play</b>	Mac OS® 10.5/10.6/10.7/10.8/10.9
<b>USB Plug 'n Play for Windows</b>	2000 XP/Windows Vista®/Windows 7/Windows 8.x
<b>Contrast Ratio</b>	Up to 10,000:1
<b>Colour Reproduction</b>	Up to 1 billion colours
<b>PROJECTION LENS</b>	
<b>Type</b>	Manual focus
<b>F-number</b>	1.80
<b>Focal Length</b>	3.71 mm
<b>Throw Ratio Range</b>	(16:10) 0.27 – 0.37, (4:3) 0.33 – 0.44, (16:9) 0.27 – 0.37
<b>Zoom Ratio</b>	Digital zoom 1.0 – 1.35x
<b>OTHER</b>	
<b>Display Performance</b>	NTSC: 480 lines, PAL: 576 lines (Depends on observation of the multi-burst pattern)
<b>Input Signal</b>	NTSC/NTSC4.43/PAL/M-PAL/N-PAL/PAL60/ SECAM
<b>Speaker</b>	16 W monaural
<b>Operating Temperature</b>	41° to 95°F (5° to 35°C)
<b>Power Supply Voltage</b>	100 – 240 V ± 10%, 50/60 Hz
<b>Power Consumption</b>	
EB-575Wi	318 W (Normal Mode)
EB-585Wi	358 W (Normal Mode)
	4.3 W Standby (Communication On)
	0.44 W Standby (Communication Off)
<b>Fan Noise</b>	35 dB (Normal Mode), 28 dB (ECO Mode)
<b>Security</b>	Kensington® lock provision, security anchor bar, password protect function

\* Whichever comes first

## INTERACTIVITY

<b>Interactive Technology</b>	Infrared, 940nm
<b>Interactive Area (image size)</b>	60-100" diagonal (16:10, WXGA)
<b>Interactive Modes Computer Interactivity<input/></b>	Interactive and Whiteboard modes Annotation, Pen: dual user
<b>PC-Free Annotation Tools</b>	Annotation, two pens
<b>Annotation Tools</b>	Epson Easy Interactive Tools, dual user
<b>PC Annotation Sources</b>	USB, HDMI, Computer 1, Computer 2, LAN
<b>PC-Free Annotation Devices</b>	Document Cameras, DVD/Blu-Ray Disc player, iPod/iPad devices <sup>3</sup>
<b>Calibration Method</b>	Automatic or Manual
<b>Interactive Connectivity</b>	USB cable for non-networked & LAN
<b>Interactive Software Requirements</b>	Epson Easy Interactive Driver (Mac only) Windows and Linux: no driver required Macintosh: Mac OS X 10.5/10.6/10.7/10.8/10.9 Epson Easy Interactive Tools for Windows and Macintosh

## System Compatibility

Microsoft Windows XP SP2, Windows XP SP3 (Home Edition/Professional), Windows Vista, Windows Vista SP1, Windows Vista SP2 (All editions except for Starter), Windows 8.x, Windows 7 SP1 (All editions except for Starter) Mac OS X 10.5/10.6/10.7/ 10.8/10.9

## INTERFACES

<b>Wireless LAN port</b>	802.11 b/g/n (optional – module sold separately)
<b>INTERACTIVE INPUT DEVICE</b>	
<b>Type of Interactive Input Device</b>	Digital Pen
<b>Interactive Pen Functions</b>	Mouse functions (left and right click), Electronic pen, LED battery status indicator
<b>Compatible Pen battery Types</b>	Manganese dry cell, alkaline dry cell
<b>Interactive Pen Power</b>	AA battery
<b>Battery life</b>	Up to 60 hours (alkaline dry cell)
<b>Interactive Pen Dimensions</b>	161 mm x 24 mm dia max.
<b>Interactive Pen Weight</b>	30g
<b>DIMENSIONS (W X D X H)</b>	
<b>Excluding feet:</b>	367 x 375 x 155 mm dia. max
<b>Weight:</b>	5.5kg

## REMOTE CONTROL

Features Computer, video, USB, LAN, source search, power, aspect, colour mode, volume, e-zoom, A/V mute, freeze, menu, help, auto, enter, esc, pointer, user Operating Angle

**Rear:** Right/left: -55 to +55 degrees, Upper/lower: +75 to +15 degrees

**Front:** Right/left: -30 to +30 degrees, Upper/lower: 0 to +60 degrees

**Operating Distance** 6 m

## WARRANTY

<b>EB-575Wi:</b>	3 years
<b>EB-575Wie:</b>	5 years
<b>EB-585Wi:</b>	3 years
<b>Lamp:</b>	1 year or 750 hours (whichever comes first)

## WHAT'S IN THE BOX

Epson EB-575Wi/585Wi ultra-short-throw interactive projector, projector wall mount, projector template sheet, installation guide, quick user's guide, 5m power cable, USB A/B cable, electronic user manual, interactive driver for Mac, Epson Easy Interactive Tools, Network Management software, projector remote control, two (2) interactive pens, pen tray, two (2) AA batteries (for interactive pens), two (2) AA batteries (for remote)

## ECO FEATURES

Energy-efficient 3LCD light engine, RoHS compliant, Recyclable product<sup>10</sup>

## ORDERING INFORMATION

<b>Product Name</b>	
<b>EB-575Wi</b>	V11H601053
<b>EB-575Wie</b>	V11H601153
<b>EB-585Wi</b>	V11H600053
<b>Accessories</b>	
Genuine Epson lamp 575Wi ELPLP79	V13H010L79
585Wi ELPLP80:	V13H010L80
Replacement air filter ELPAP40	V13H134A40
Table projection mount ELPMB29	V12H516040
External speakers ELPSPO2	V12H467053
Wireless 802.11b/g/n LAN unit ELPAP07	V12H418P13
Quick wireless USB key ELPAP09	V12H005M09
DC-12 visualiser	V12H594053
DC-20 visualiser	V12H500053
Easy interactive pen A (orange) ELPPN04A	V12H666010
Easy interactive pen B (blue) ELPPN04B	V12H667010
USB extension cable ELKPC31	V12H525001
Connection and control box ELPCB02	V12H614053

## Better Products for a Better Future

Epson is the registered trademark of Seiko Epson Corporation. All other names and company names used herein are for identification purpose only and may be the trademarks or registered trademarks of their respective owners. Epson disclaims any and all rights in those marks. All print samples shown herein are simulations. Specifications are subject to change without notice.

**EPSON AUSTRALIA**  
3 Talavera Road  
North Ryde NSW 2113  
Tel: (02) 8899 3666  
[www.epson.com.au](http://www.epson.com.au)

**EPSON NEW ZEALAND**  
Level 2, 7-9 Fanshawe Street  
Auckland, 1010  
Tel: (09) 366 6855  
[www.epson.co.nz](http://www.epson.co.nz)

ABN 91 002 625 783  
04/14

**EPSON**  
EXCEED YOUR VISION